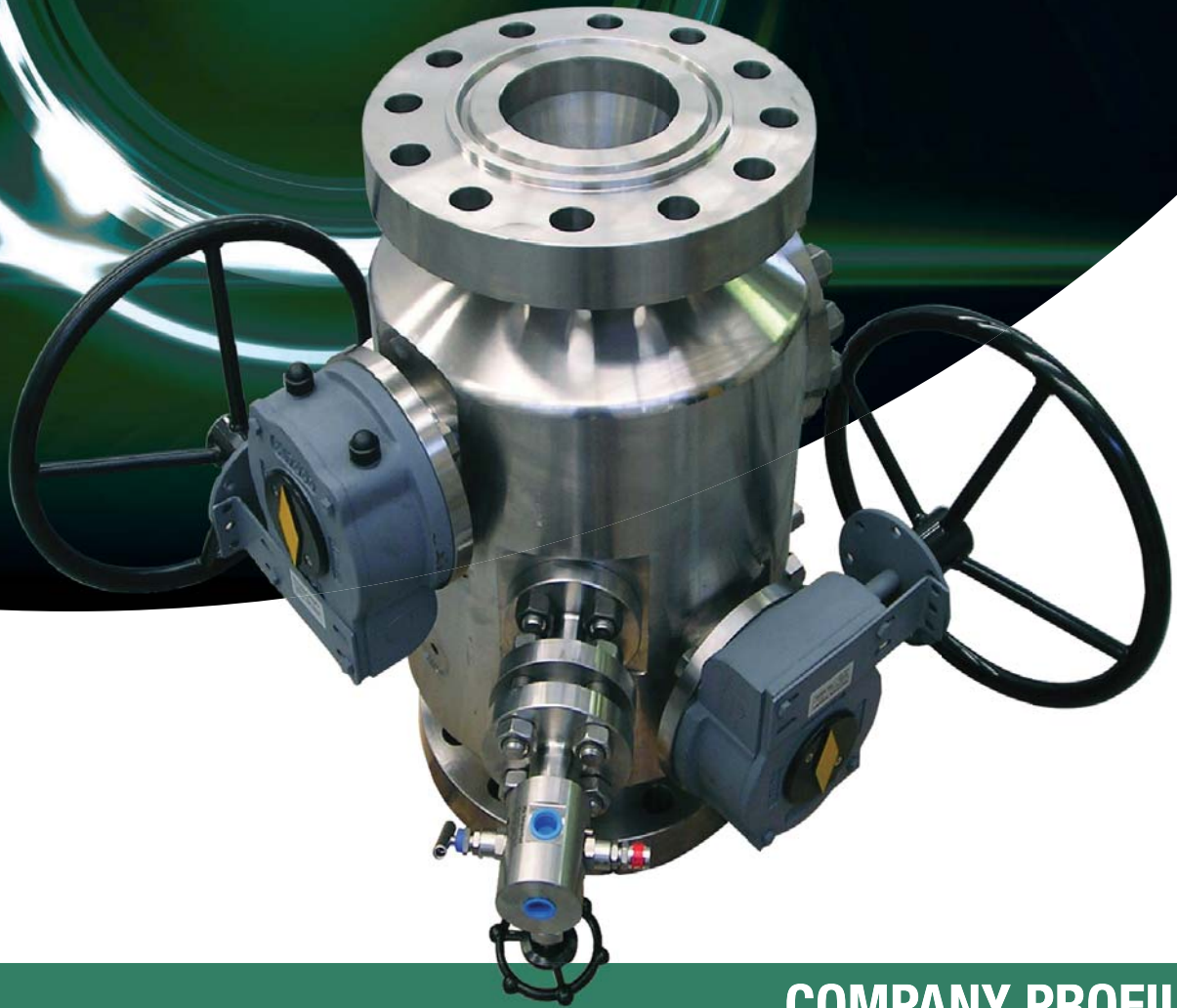


OUR SOLUTION:

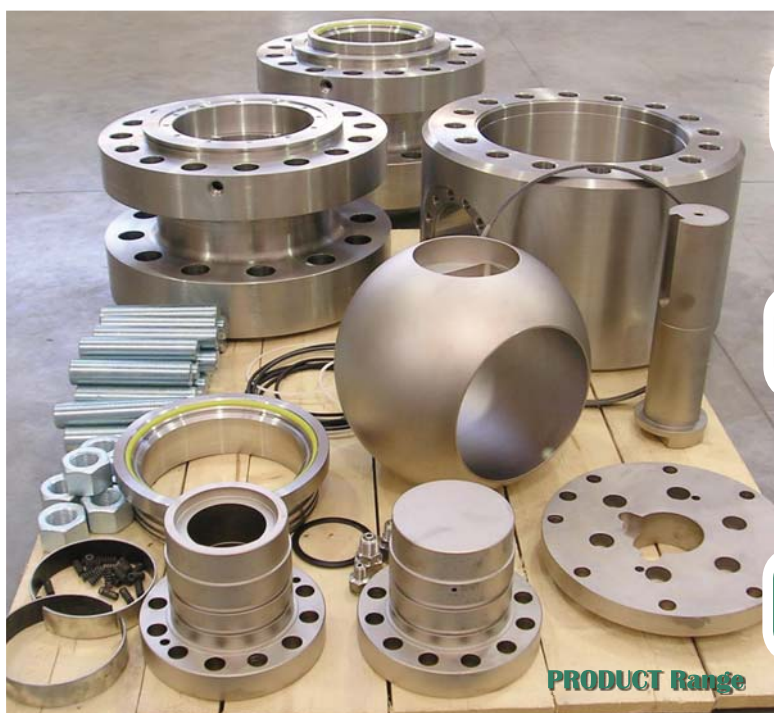
BALL & PLUG VALVES
DOUBLE BLOCK AND BLEED VALVES
THREE AND FOUR WAY VALVES
CRYOGENIC VALVES
METAL SEATED VALVES
ACTUATED VALVES
DUAL EXPANDING PLUG VALVES



COMPANY PROFILE
PASSION FOR QUALITY



Imperial Valve was founded in 1993 by engineers with over 25 years experience in the design and construction of innovative valve technology. Imperial Valve is committed to providing its customers with world class quality products together with unrivalled service. Our mission is to provide design, manufacture, testing and certification based on our client's needs and in accordance with any technical specification. Supplying the finished product in your timeframe is our goal. Imperial Valve design and production facilities are located in Italy and Denmark. Our local supply chain enables the company to proudly claim that it only uses materials and components sourced within the European Union.



1

In addition to valves designed in accordance with International standards such as API/ASME/ASTM, Imperial Valve can design and produce products that meet customer's specific requirements and provide solutions for difficult applications.

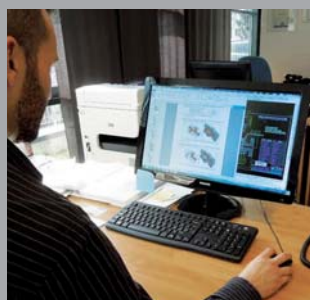
2

The technical department has access to a range of design systems including autocad and solidworks. In the event that designs are required to meet the most extreme conditions we can provide structural verifications by finite elements with the use of the Nastran application.

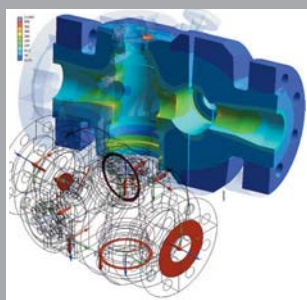
3

If the valve you require is not available as an existing design, Imperial Valve can design and offer a "custom-made" design and production solution.

DESIGN



VALIDATION



CERTIFICATION



MACHINING



STOCK



DIMENSIONAL check



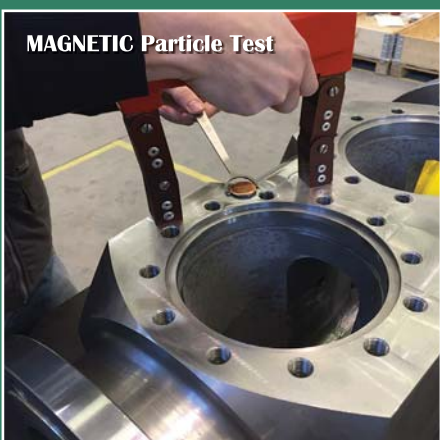
ULTRASONIC Test



POSITIVE Mat.Identification



MAGNETIC Particle Test



TESTING

LIQUID Penetrant Test



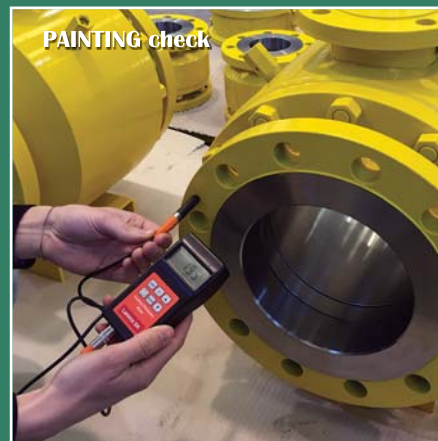
PRESSURE Test



FUGITIVE Emission Test



PAINTING check



ASSEMBLING



TIGHTENING



TESTING



PAINTING



PACKING



FLOATING

CONSTRUCTION:

- Bolted Body • Screwed Body • Welded Body

SIZES:

- From ½" up to 10"

PRESSURE CLASSES:

- ANSI class from 150 to 2500 Lbs
- DIN class from PN10 to PN420

CONNECTIONS:

- Flanged ends • Screwed ends
- Welded ends • HUB ends

DESIGN:

- B16.34 – API6D – ISO 17292 – ASME VIII div.2

TEST:

- Fire Safe acc.to ISO 10497 Ed. 2010 & API 6FA Ed.1999



TRUNNION

CONSTRUCTION:

- Bolted Body • Top entry
- Screwed Body • Welded Body

SIZES:

- From ½" up to 24"

PRESSURE CLASSES:

- ANSI class from 150 to 4500 Lbs
- DIN class from PN10 to PN420

CONNECTIONS:

- Flanged ends • Screwed ends
- Welded ends • HUB ends

DESIGN:

- B16.34 – API6D – ISO 17292 – ASME VIII div.2

TEST:

- Fire Safe acc.to ISO 10497 Ed. 2010 & API 6FA Ed.1999



PLUG VALVES

CONSTRUCTION:

- Lubricated standard type
- Lubricated inverted type
- Top entry diverted type

SIZES:

- From ½" up to 24"

PRESSURE CLASSES:

- ANSI class from 150 to 2500 Lbs
- DIN class from PN10 to PN420

CONNECTIONS:

- Flanged ends • Screwed ends
- Welded ends • HUB ends

DESIGN:

- B16.34 – API6D – ISO 17292 – ASME VIII – API599

TEST:

- Fire Safe acc.to ISO 10497 Ed. 2010 & API 6FA Ed.1999



DOUBLE BLOCK AND BLEED

The Imperial Ball and Plug valves can be manufactured to the 'Double Block and Bleed' configuration with two balls/plugs either side of the valve body and the needle valve in the centre, both for instrumentation and process. This solution allows us to save weight, space and money, which are now increasingly important parameters within modern industries.

SIZES:

- From ½" up to 24"

PRESSURE CLASSES:

- ANSI class from 150 to 4500 Lbs • DIN class from PN10 to PN420

CONNECTIONS:

- Flanged ends • Screwed ends • Welded ends • HUB ends

DESIGN:

- B16.34 – API6D – ISO 17292 – ASME VIII – API599 – EEMUA 182

TEST:

- Fire Safe acc. to ISO 10497 Ed. 2010 & API 6FA Ed.1999



THREE AND FOUR WAY

CONSTRUCTION:

- Ball & Plug
- Floating & Trunnion
- "L" or "T" or "X" bore
- Horizontal & vertical position

SIZES:

- From ½" up to 12"

PRESSURE CLASSES:

- ANSI class from 150 to 1500 Lbs
- DIN class from PN10 to PN250

CONNECTIONS:

- Flanged ends • Screwed ends • Welded ends • HUB ends

DESIGN:

- B16.34 – API6D – ISO 17292 – ASME VIII – API599

TEST:

- Fire Safe acc. to ISO 10497 Ed. 2010 & API 6FA Ed.1999



CRYOGENIC VALVES

The Imperial Ball valves can be designed and manufactured for use in Cryogenic application with working temperatures down to -196°C. The extended bonnets prevents the stem seals from freezing ensuring the valve maintains to be low torque. To ensure 0 leakage.

SIZES:

- From ½" up to 24"

PRESSURE CLASSES:

- ANSI class from 150 to 2500 Lbs
- DIN class from PN10 to PN420

CONNECTIONS:

- Flanged ends • Screwed ends • Welded ends • HUB ends

DESIGN:

- B16.34 – API6D – ISO 17292 – ASME VIII

TEST:

- Fire Safe acc. to ISO 10497 Ed. 2010 & API 6FA Ed.1999



METAL SEATED VALVES

Metal seated abrasive applications: In the case of applications where erosion is an issue, the valve seal can be made with metal to metal contact between the ball and seats. This can be hardened with carbides of chromium, tungsten or with carry-stellite material to make it more resilient.

Metal seated high temperature applications: In the case of applications where the valve is exposed to high temperature, the valve seal can be made with metal to metal contact between the ball and seats. This can be hardened with carbides of chromium, tungsten or with a carry-stellite material to make it more resilient; all seals will also be replaced with graphite rings.

SIZES:

- From ½" up to 24"

PRESSURE CLASSES:

- ANSI class from 150 to 4500 Lbs • DIN class from PN10 to PN420

CONNECTIONS:

- Flanged ends • Screwed ends • Welded ends • HUB ends

DESIGN:

- B16.34 – API6D – ISO 17292 – ASME VIII div.2

TEST:

- Fire Safe acc.to ISO 10497 Ed. 2010 & API 6FA Ed.1999
- ISO 5208 Rate A



ACTUATED VALVES

The Imperial Ball and plug valves can be supplied with any type of pneumatic, hydraulic, or electric actuator including control panels and accessories such as position indicators, solenoid valves or tanks.

CUSTOMIZED VALVES

If the Valve you require is not available as an existing design Imperial Valve can provide a bespoke solution of design and production.



DUAL EXPANDING PLUG VALVES

IMPERIAL VALVE dual expanding plug valves are equipped with two seating surfaces, each one can seal in both directions. This feature gives you a double block and bleed function using just a single valve.

These valves are designed with a rising stem and a rotating plug with retracting slips. By design, the valve doesn't have any friction during the opening/closing phase. The sealing is guaranteed by an elastomer which is fully vulcanized on the metal slip. Thanks to their construction, these valves are easy to be maintained because they can be serviced in-line ensuring minimum down-time and saving cost.

MAIN FEATURES:

- Fire safe certified • Zero leakage • Piggable valves
- Valves can be supplied with any kind of actuator

CONSTRUCTION:

- Full Bore • Reduced Bore

SIZES:

- From 2" to 24"

PRESSURE CLASS:

- ANSI class from 150 to 600 • DIN class from PN10 to PN100

CONNECTION:

- Flanged ends

DESIGN:

- API 599 – API 6D – ISO 14313 – ISO 17292 – ANSI B16.34

TEST:

- API 6D – API 598 • EN-12266/1 – EN-12266/2 • BS 6755 part 1



INSTRUMENT VALVES

- Needle valves and instrument manifolds
- Monoflange valves (block, block & bleed and double block & bleed)
- Single and double block & bleed valves (ball and/or needle types)
- Chemical injection & sampling valves

PRESSURE CLASSES

- 150 TO 2500 Lbs
- 6000 & 10000 Psi
- 10000, 15000, 20000 & 60000 Psi

CONNECTIONS

- Flanged ends • screwed ends

DESIGN

- ANSI B16.34 & EEMUA 182



INSTRUMENT ENCLOSURES

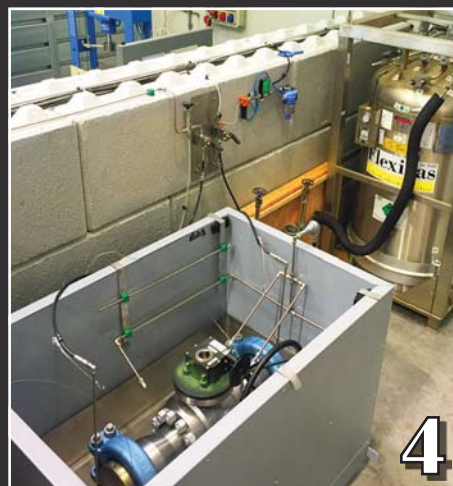
- GRP instrument enclosures and hot boxes
- Custom fit double Sided PTFE coated Glass Fibre Fabric "Flexi Jaxx"
- Sunshades in GRP or stainless steel





TESTING DEPARTMENT

- 1 Three heads vertical test bench**
60 ton. 700 bar.
- 2 Vertical test bench**
50 ton. 700 bar.
- 3 Horizontal test bench**
400 ton. and 1050 bar.
- 4 Cryogenic testing unit**
up to -196°C .
- 5 High pressure gas station with booster**
Separate high pressure gas station with booster up to 700 bar suitable for all test units.





CUSTOMER REFERENCES:

WINTERSHALL
BRITISH PETROLEUM
MAERSK
NAM
GASUNIE
SBM (SINGLE BUOY MOORINGS INC.)

HYUNDAI ENGINEERING & CONSTR. CO LTD
BLUEWATER
CHEVRON PHILLIPS CHEMICALS
EXXONMOBIL CHEMICAL
PETRONAS CARIGALI SDN. BHD
SHELL GLOBAL SOLUTIONS INT BV

TECHNIP FMC
ADCO
BWO
SIEMENS

PRODUCT CERTIFICATION:

- ISO EN 10204 3.2 & 3.1
- Fire safe API 6FA & ISO 10497
- Fugitive Emission Test acc. to TA-LUFT EN ISO 15848-1-2



MATERIALS OF CONSTRUCTION:

- CARBON STEEL
- STAINLESS STEEL
- SMO, DUPLEX & SUPERDUPLEX
- EXOTIC ALLOY
 - TITANIUM
 - BRONZE



Imperial Valve

P.O. Box 50041, 1305AA Almere, The Netherlands

De Steiger 215, 1351AW Almere, The Netherlands

Phone: +31 (0)36 531 4014

E-mail: salesdept@imperialvalve.nl

Web: www.imperialvalve.nl